



Fast User Migration

User Guide

© 2009-2024 TaiRox Software Inc. All rights reserved.

Important Notice

TaiRox does not warrant or represent that your use of this software product will be uninterrupted or error-free or that the software product can be run with any versions of Sage 300 other than 2012 to 2025, or that the information in this document is completely accurate. TaiRox warrants that any media by which you have received this software is free from defects. TaiRox will replace any such defective media. TaiRox expressly disclaims all other warranties, representations, conditions and guarantees of any kind including, but not limited to, warranties for merchantability or fitness for a particular use.

Fast User Migration Features

Fast User Migration is a SQL Server-specific program for migrating Sage 300 Vault information from one SQL server to another, letting you recreate Sage 300 users on the target server.

The program:

- Migrates all user information from the source vault database to the target DB, including passwords and email settings.
- Performs INSERTs only on the target databases, so you can migrate new users to the target but you cannot update user accounts that are already there.
- Adds user accounts to the target environment using several passes, adding new Logins to the target server's SQL Server Security and then adding the logins to the target Store and Vault databases.
- Does not create the ADMIN or GUEST logins in the target environment. These logins are created by Sage 300 when you set up a new Sage 300 environment.

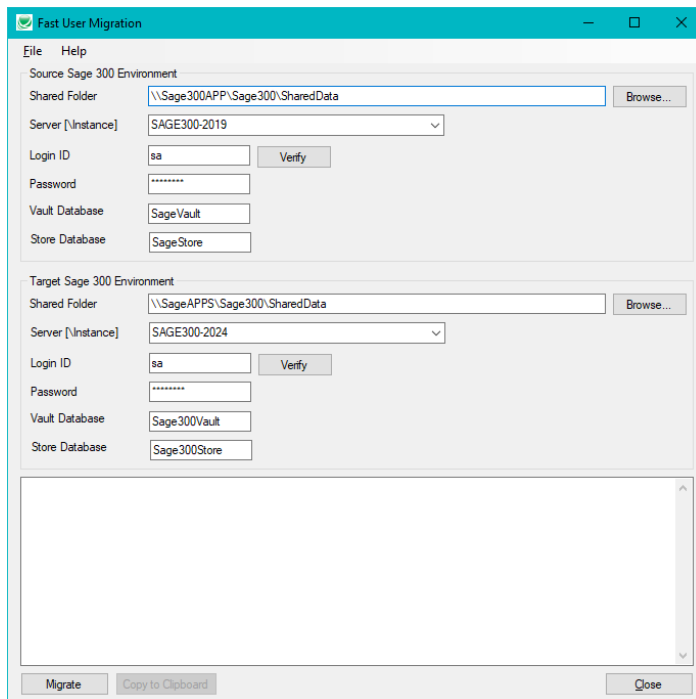
```
##S3_LOGIN_ADMIN##SAGE300VAULT
##S3_LOGIN_GUEST_##SAGE300VAULT
```

Note: Fast User Migration is packaged with TaiRox SOX User Management. You use the SOX User Management product license key to license Fast User Migration.

Running Fast User Migration

You should set up your target Sage 300 environment before migrating users. Once you have created the target Sage 300 environment, you can proceed to migrate users.

Launch Fast User Migration from the Windows Start List or from a shortcut on the desktop – like other Windows programs. You must have access to SQL Server Security and rights to the source and target databases in order to use the program.



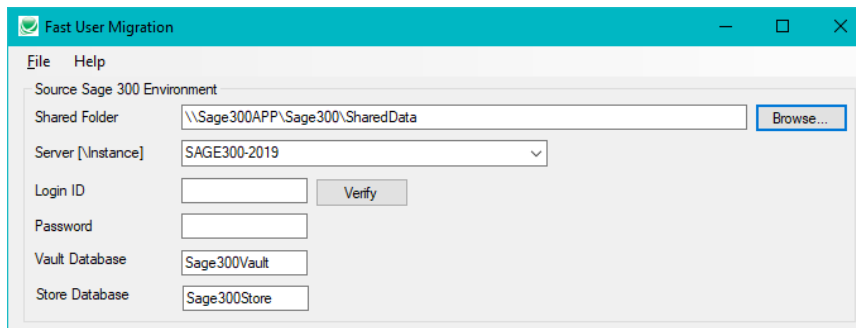
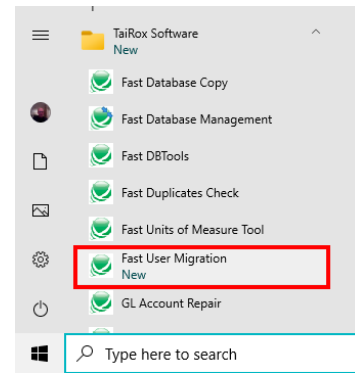
Start Fast User Migration and log in to the source and target servers:

1. Click the Start List entry or shortcut to start Fast User Migration.

If Fast User Migration does not appear in the Windows Start List or you do not have the shortcut on your Windows desktop, contact your supervisor or IT department.

Note:

- You must have access to the source and target servers and Sage 300 databases and SharedData folders in order to use the program.
2. Enter the location of the source Sage 300 SharedData folder or use the Browse button to find it.

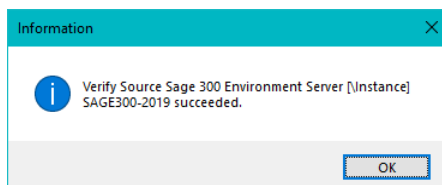


The program will fill in the Sage 300 database server and database names for the Sage 300 vault and store databases from the VaultSettings.ini file.

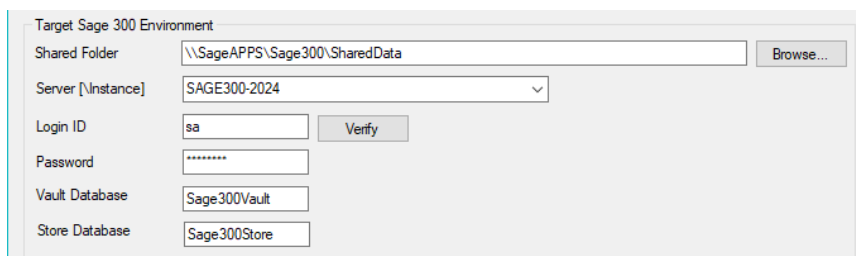
Use UNC paths to access SharedData folders on different servers. The screen above points to a SharedData folder on Windows server "Sage300App".

3. Enter the SQL Server Login ID and password and click the Verify button to check that the login credentials are valid.

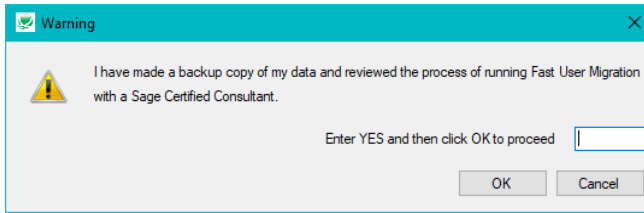
The program will display the following message if the login was successful.



4. Enter the location of the target Sage 300 SharedData folder or use the Browse button to find it.



5. Enter the SQL Server Login ID and password and, again, click the Verify button to check that credentials are valid.
6. If you are ready to proceed, click the Migrate button at the bottom of the screen. The program will display the following message for you to confirm that you want to proceed.



7. Type “YES” in the message field and click the OK button to proceed.

The program will begin inserting users in the Sage 300 source database into the target database, adding new Logins to the target server’s SQL Server Security, and then adding the logins to the target Store and Vault databases.

Note that User Migration will not create the ADMIN or GUEST logins in the target environment:

```
##S3_LOGIN_ADMIN##SAGE300VAULT
##S3_LOGIN_GUEST_##SAGE300VAULT
```

These logins are created by Sage 300 when you set up a new Sage 300 environment.

8. The program displays a log of all activity as it migrates users to the target Sage 300 environment.

```
Fast User Migration Build 8799 created on 2024-02-03 started on SAGE300-2019 at 2024-02-05
11:49:09 AM
```

```
All users except for the Source Sage 300 Environment ADMIN and GUEST user will be migrated.
```

```
Migrate users started.
```

```
Logging in to Source Sage 300 Environment Server [\Instance] SAGE300-2019 Master
Database...
```

```
Logging in to Target Sage 300 Environment Server [\Instance] SAGE300-2024 Master
Database...
```

```
Logging in to Source Sage 300 Environment Server [\Instance] SAGE300-2019 Vault
Database Sage300Vault...
```

```
Logging in to Source Sage 300 Environment Server [\Instance] SAGE300-2019 Store
Database Sage300Store...
```

```
Logging in to Target Sage 300 Environment Server [\Instance] SAGE300-2024 Vault
Database Sage300Vault...
```

```
Logging in to Target Sage 300 Environment Server [\Instance] SAGE300-2024 Vault
Database Sage300Vault...
```

```
Loading users to create from Source Sage 300 Environment Server [\Instance] SAGE300-
2019...
```

```
Loading users to create from Source Sage 300 Environment Server [\Instance]
SAGE300-2019 complete.
```

```
Creating users in Target Sage 300 Environment Server [\Instance] SAGE300-2024...
```

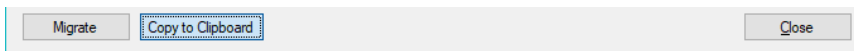
```
Creating user CARLA...
```

```
Creating user CARLA completed.
```

```
Creating user DON...
```

```
Creating user DON completed.
```

9. Click the Copy to Clipboard button when migration is complete to copy the log to the clipboard, then paste to a file to keep a record of the migration for later reference.



Notes Regarding the Migration

- All users except for the Source Sage 300 Environment ADMIN and GUEST user will be migrated. These logins are created by Sage 300 when you set up a new Sage 300 environment.

```
##S3_LOGIN_ADMIN##SAGE300VAULT
##S3_LOGIN_GUEST_##SAGE300VAULT
```

- The program performs INSERTs only on the target database, so you can migrate new users to the target but you cannot update user accounts that are already there.
- The program adds users to [SQL Server Name] > Security > Logins and to the Sage 300 Vault and Store databases.