



Automate G/L Consolidation

User Guide

© 2009-2024 TaiRox Software Inc. All rights reserved.

Important Notice

TaiRox does not warrant or represent that your use of this software product will be uninterrupted or error-free or that the software product can be run with any versions of Sage 300 other than 2012 to 2025, or that the information in this document is completely accurate. TaiRox warrants that any media by which you have received this software is free from defects. TaiRox will replace any such defective media. TaiRox expressly disclaims all other warranties, representations, conditions and guarantees of any kind including, but not limited to warranties for merchantability or fitness for a particular use.

Automate G/L Consolidation

Automate G/L Consolidation drives any number of G/L Consolidation operations that you set up using the standard Sage 300 G/L Consolidations module. It eliminates the manual steps involved in consolidating Sage 300 General Ledgers, letting you consolidate 50 or 100 companies – all in a single operation.

The resulting G/L batches can optionally be posted or provisionally posted in the consolidated ledger. You can even consolidate a source company into multiple consolidation companies. (See [Consolidating a Source Company into Multiple Consolidation Companies](#) at the end of this guide.)

The program is designed to run as an unattended Windows Scheduled Task or from the user interface.

Note:

- Automate G/L Consolidation uses the business logic in the Sage 300 G/L Consolidation program. This program must be activated in all source and target companies. The use of the core application's business logic insures proper multiuser operation.
- Automate G/L Consolidation also requires a LanPak license to access Sage 300. If there are no LanPak licenses available, the program will not run.

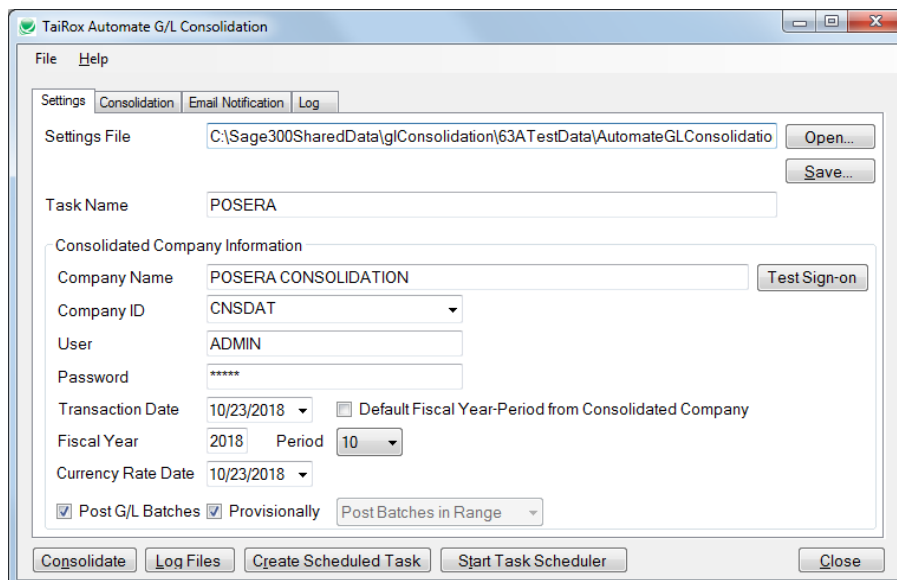
Automate G/L Consolidation stores database login and consolidation setup information in an XML file.

For situations where several consolidations are performed every month, each involving different source and target companies, you can set up multiple XML files – which can be selected when running Automate G/L Consolidation from its user interface or specified for different Windows Scheduled Tasks.

Running Automate G/L Consolidation

The Settings tab

The Settings tab includes the company, authentication, settings file name, and options selected for a consolidation task which would typically be run once a month.



Click the **Consolidate** button to run the consolidation task immediately using the displayed settings.

Complete the fields on the Settings tab as follows:

Settings File – All the settings from all tabs on the form are stored here. All password information is encrypted in the XML file. Any number of tasks can be set up, stored in different XML files and run as separate Windows Scheduled Tasks.

Task Name – This name can appear in the subject line of email notifications.

Company Name – This is the name of the Sage 300 consolidated company.

Company ID – This is the Sage 300 Company ID of the consolidated company.

User – The program will use this login ID to log in to the various companies. Using the ADMIN user is a simple way to guarantee that there will be sufficient rights in all companies.

Password – This password will be encrypted in the XML file.

Transaction Date* – You can specify the transaction date for the transactions if you are using the Consolidate button to run the program.

Default Fiscal Year-Period from Consolidated Company* – When the program is run, the fiscal year and period are defaulted from the consolidated company rather than defaulting from the system date. This setting avoids the need to set the year and period every time the program is run if the fiscal calendar does not match the calendar year.

Fiscal Year* – The fiscal year for the transactions.

Period* – The fiscal period for the transactions.

Currency Rate Date* – Any currency conversions will use rates based on this date.

Post G/L Batches – Whether or not to post the G/L Batches that result from the consolidation.

Provisionally – If checked, posted G/L Batches will be provisionally posted.

Posting Drop-Down – Lets you choose "Post Batches in Range" or "Post Batches Individually".

If you post individually, the G/L will generate a separate posting journal for each batch posted – so it may be easier to match posting journals to the companies where the transactions originated.

Note that you cannot choose to post "individually" if you choose Provisional Posting.

* **Dates, Fiscal Years and Periods are not stored in the XML file.** When running as a Windows Scheduled Task all transactions are based on the system date.

See [Create Scheduled Task](#) for instructions on setting up Windows Scheduled Tasks to fully automate consolidations.

The Consolidation tab

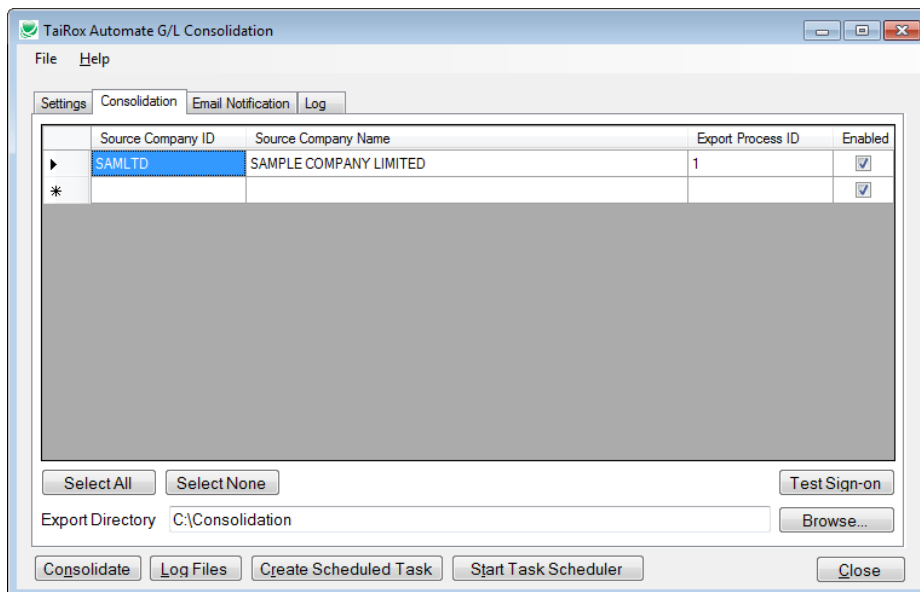
The Consolidation tab displays a grid that lists the source companies for the consolidation procedure and each of the Sage 300 G/L Consolidations "Export Process ID" being automated.

You must set up the consolidation processes in the Sage 300 G/L Consolidation module before you can add them here.

The Enabled checkbox lets you include or exclude export processes when you run the consolidation task.

You can use the Select All and Select None buttons to choose or exclude all export processes in the list.

The Export directory is used for transferring export files from the source ledgers to the consolidation ledger.



The Email Notification tab

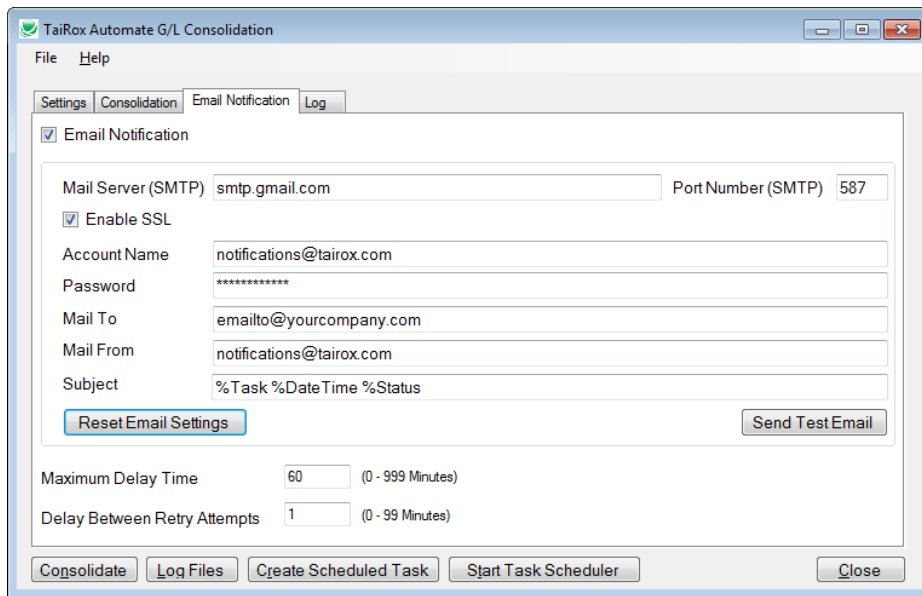
The Email Notification tab contains the settings for email notification.

Email notifications can be turned on or off. You can use any SMTP server accessible from the server with credentials as you would set them up in an email client such as Outlook.

The settings shown below use notifications@tairox.com, a Gmail account for sending out notifications. (Note that this is not a publicly available email account.)

Select the Email Notification checkbox, enter your email server and account information, then click the Send Test Email button to check that your settings work correctly.

You will need proper credentials that work from the computer running Automate G/L Consolidation.



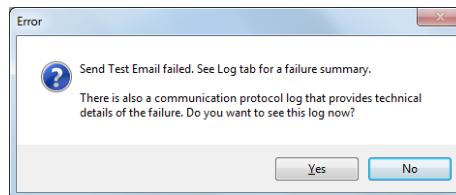
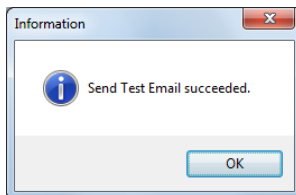
Mail To: You can include any number of email addresses, separated by commas or semi-colons.

Subject: Use any subject line you want.

The codes %Task, %DateTime and %Status will be replaced respectively by the Task Name on the Server Tab, the Date and Time that the job completes and the Status of the job (SUCCESS or FAILURE). For compatibility reasons %Job will be treated the same as %Task.

The Reset Email Settings button will return the settings shown here, with the appropriate password for notifications@tairox.com.

Send Test email: Click this button to test email settings. One of the following dialogs can appear depending on whether the test was successful. If the test fails, check the log file by clicking the Yes button in the error message.



Note regarding “Enable SSL” if unsupported by the SMTP server

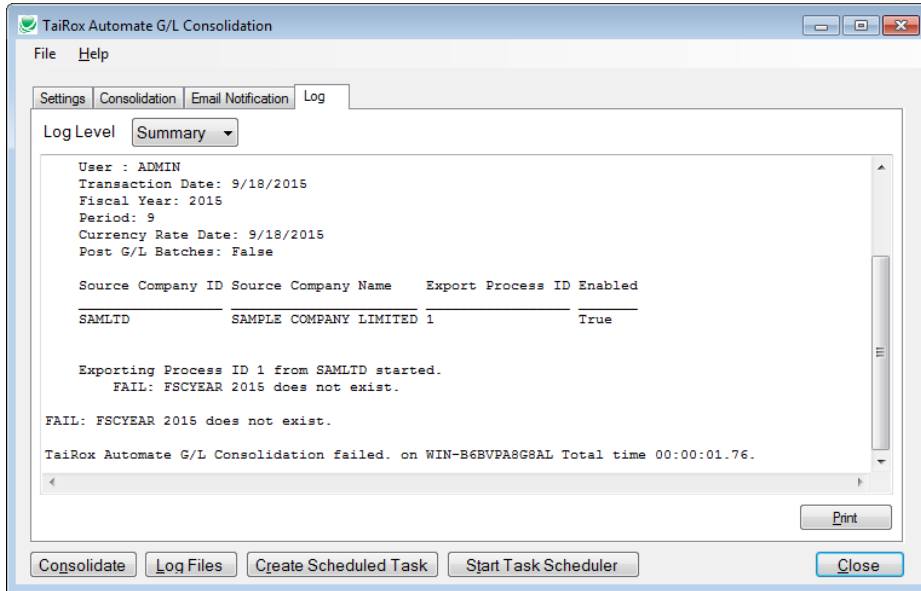
If you select the “Enable SSL” checkbox, the program will first try to send a test email securely. If it does not succeed, it will try to send a test email insecurely. The program will display an error message if the secure test fails, but the insecure test is successful.

If this message appears, it means that:

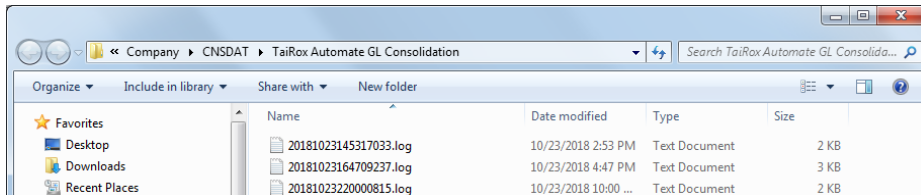
- Your SMTP server does not support current email communication styles on the port provided. (The "Enable SSL" checkbox has different meanings for different email sending mechanisms, particularly older ones.)
- You should uncheck “Enable SSL” to send emails without SSL protection.

The Log tab

The Log tab provides a display window that is active when you click the Consolidate button.



Automate G/L Consolidation keeps a daily log file. You can view previous log files by clicking on the Log Files button at the bottom of the screen. It will launch Windows Explorer and display the log file directory.



Creating and Automating a Scheduled Task

Automate G/L Consolidation will create a basic task that can be managed with the Task Scheduler. The task will have the Task Name that you specify on the Automate G/L Consolidation Settings tab.

We provide this feature to ensure that the Task Scheduler's Action tab will have the correct path to the Automate G/L Consolidation program and have the current XML path and name. These are the most common errors made by consultants who are unfamiliar with the Task Scheduler.

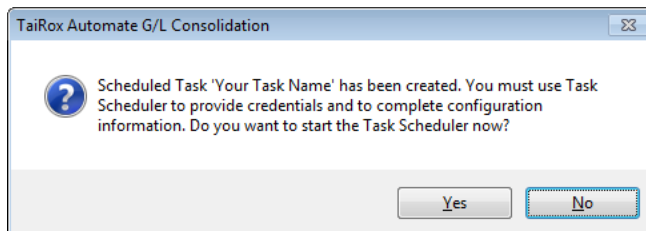
Important: You **MUST** edit the task created by Automate G/L Consolidation in the Windows Task Scheduler to provide credentials for the task. Otherwise it will not run. Other important options also need to be set up properly.

Consult the Windows Task Scheduler documentation for important details beyond the scope of this document.

Using the Create Scheduled Task button

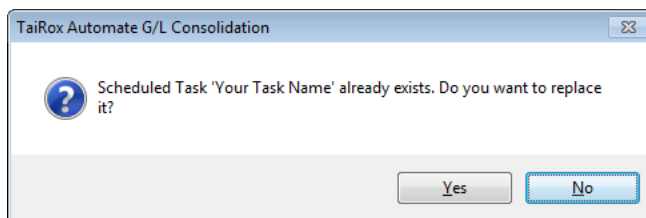
Fill in the fields for Automate G/L Consolidations and run it manually before creating the scheduled task to ensure that the XML file is properly set up.

- **Click the Create Scheduled Task button to create the task.** The following message will appear:



- Click Yes to start the Windows Task Scheduler.

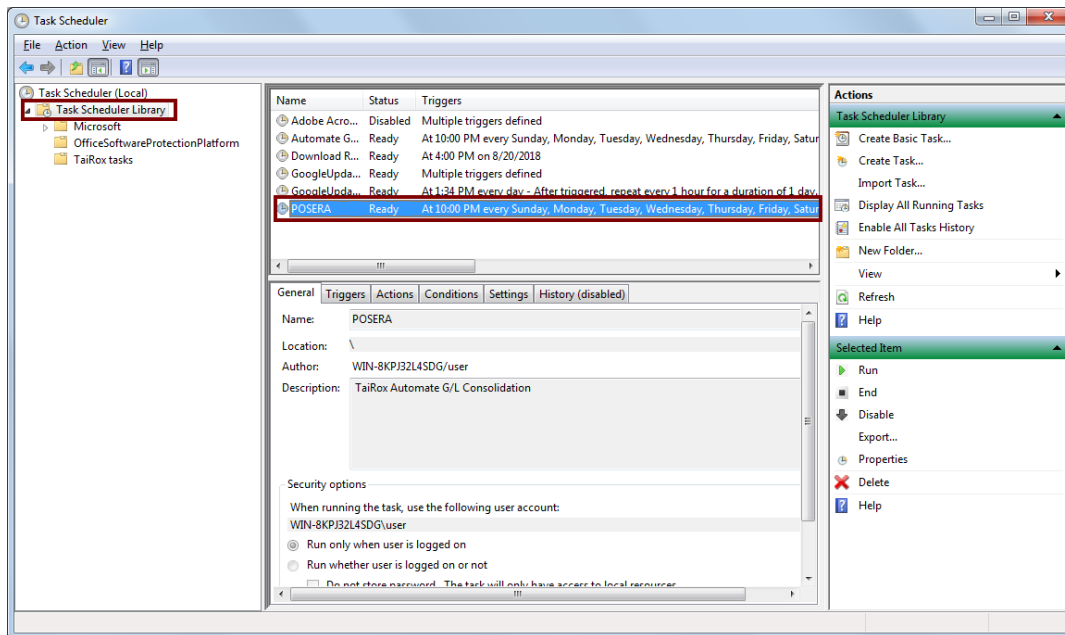
If a task with the same name already exists, the program will warn you that the task exists.



Note: If you replace the task, you will lose the existing (i.e. previous) task settings.

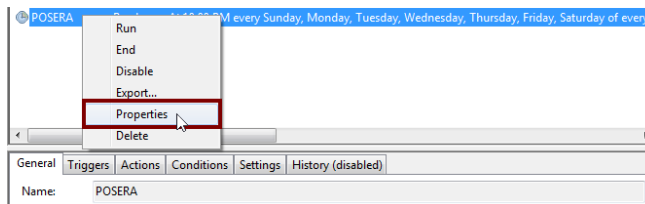
- **Click the Start Task Scheduler button to open the Task Scheduler window.**
The Task Scheduler varies in appearance from one version of Windows to another.

Creating and Automating a Scheduled Task



- Click the “Task Scheduler Library” folder in the left panel, and then select the task you just created in the middle panel.
 - Right-click the task entry and select **Properties** to edit the task settings.

You MUST edit the properties to add the task user account password. When you save the properties, the program will ask you to provide the password for the task user.



If the task does not run properly after set up, the problem is usually that some authentication has failed.

Some hints:

- The scheduler requires a user and password. Create Scheduled Task created the task with a task user, but it did not add the task user’s password.
 - You must edit the task properties to specify the password (when you click Save).
 - You can also change the task user when you edit the task properties.
- An experienced Windows IT person should be able to solve any problems.
- Your error has occurred before – do an internet search specifying the error message.

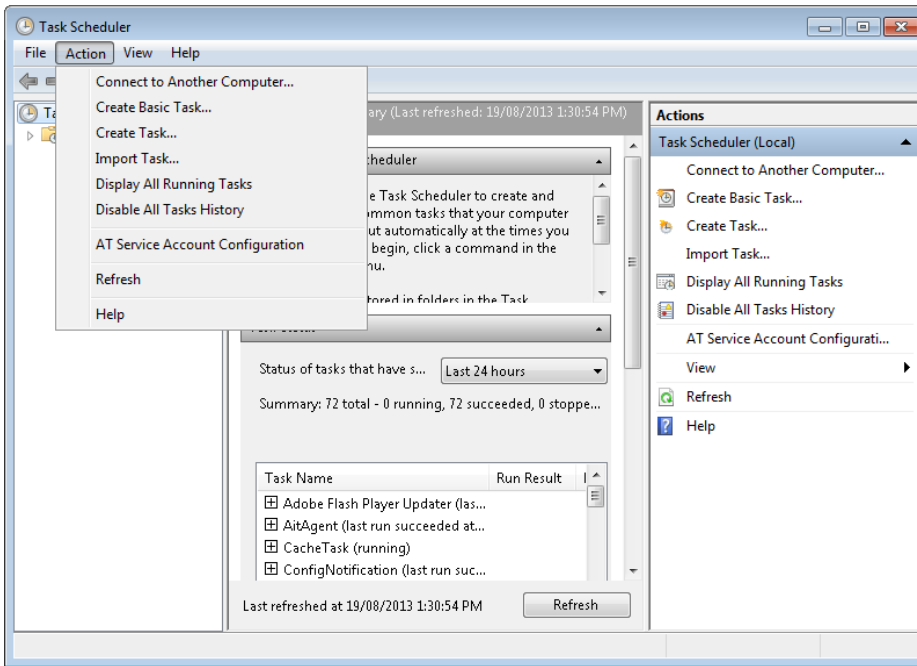
Manually Create a Basic Windows Task

The easiest and most reliable way to create the Windows task is to use the Create Scheduled Task button – described above. However, you can also follow these general instructions to create the task from scratch, using the Windows Task Wizard.

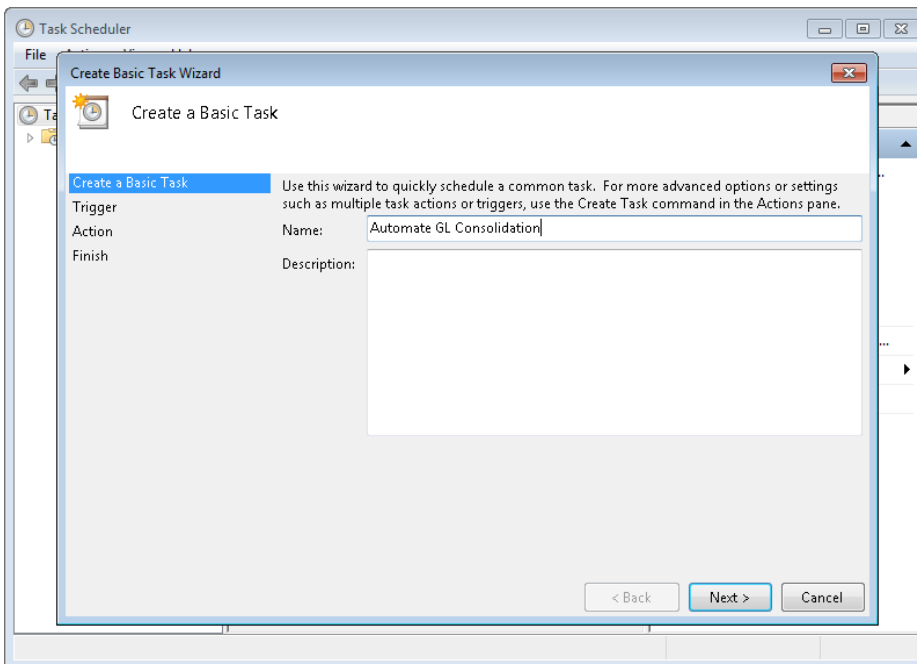
The Windows Task Scheduler program is available from **Control Panel > Administrative Tools > Task Scheduler**.

- Select **Action > Create Basic Task** to start the task wizard.

Creating and Automating a Scheduled Task

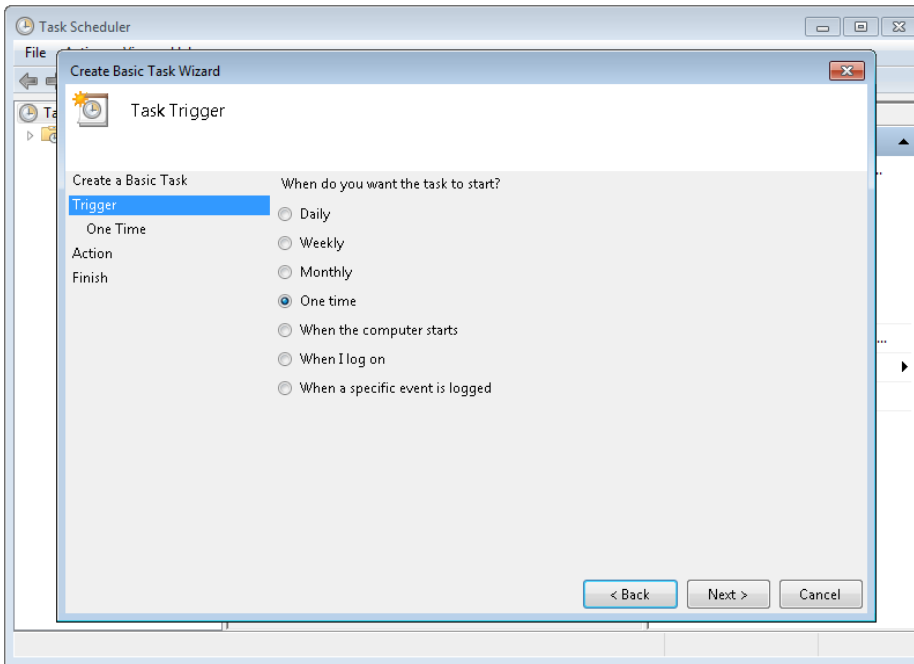


- Enter the name of the task and click next.

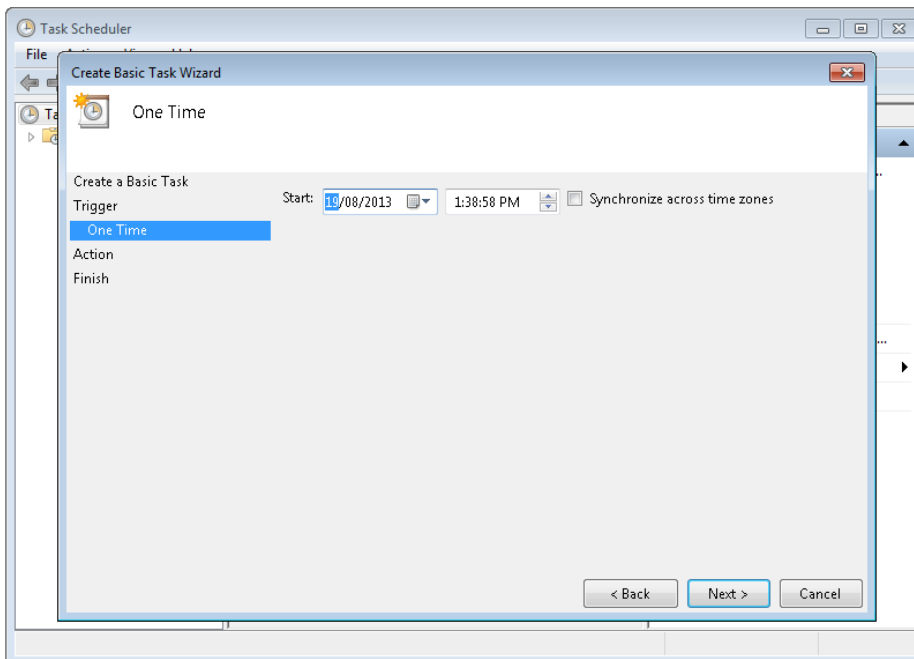


- You can select any schedule you want. In this example Automate G/L Consolidation is scheduled to run One Time.

Creating and Automating a Scheduled Task

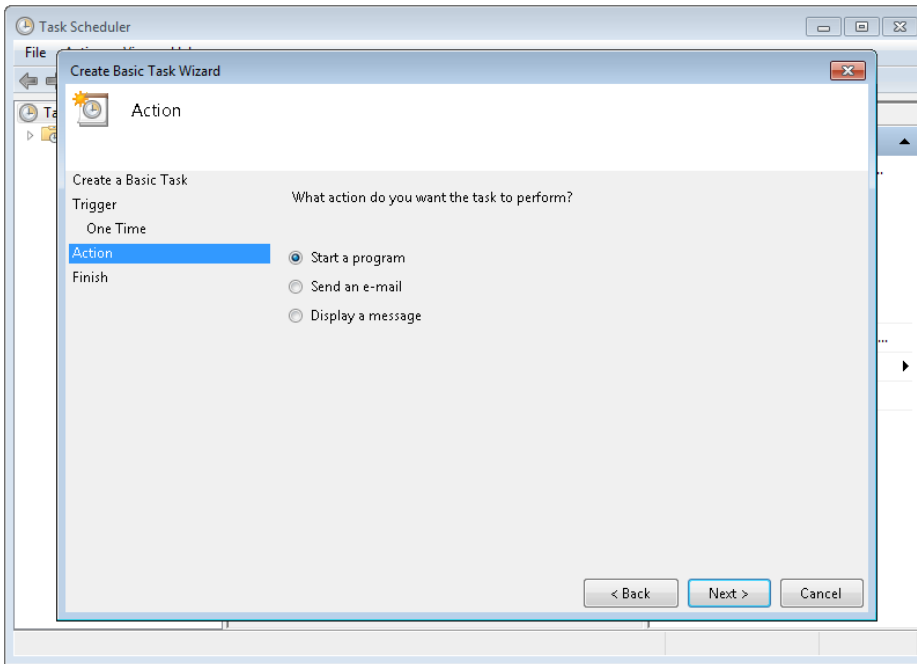


- Select when you want to start the task and click next.
- Select the date and time you want to run Automate G/L Consolidation One Time and click next.

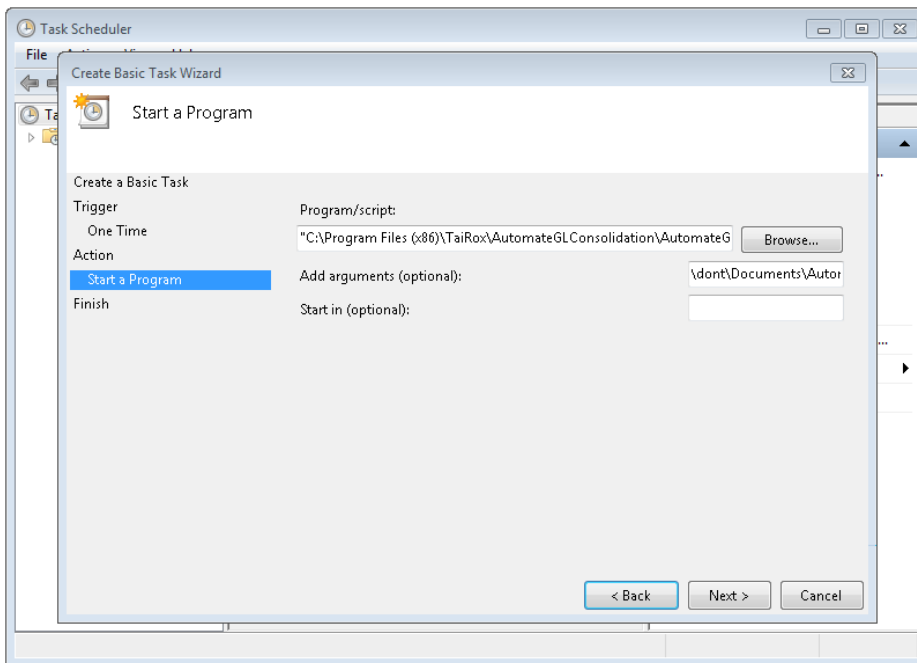


- To run Automate G/L Consolidation select Start a Program and click next.

Creating and Automating a Scheduled Task

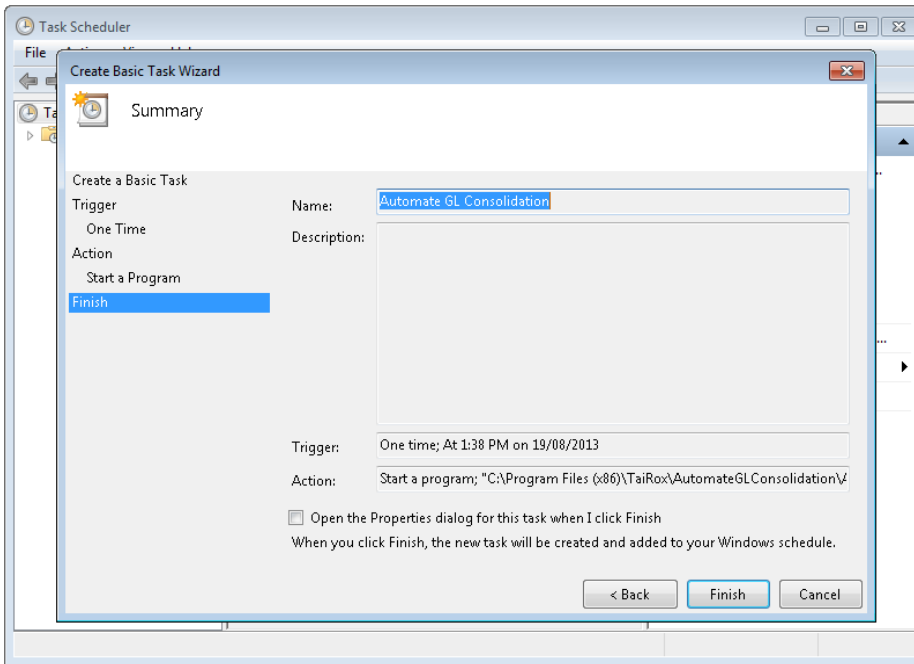


- Click the Browse button and browse to:
"C:\Program Files (x86)\TaiRox\AutomateGLConsolidation"
and select AutomateGLConsolidation.exe as the program to start.

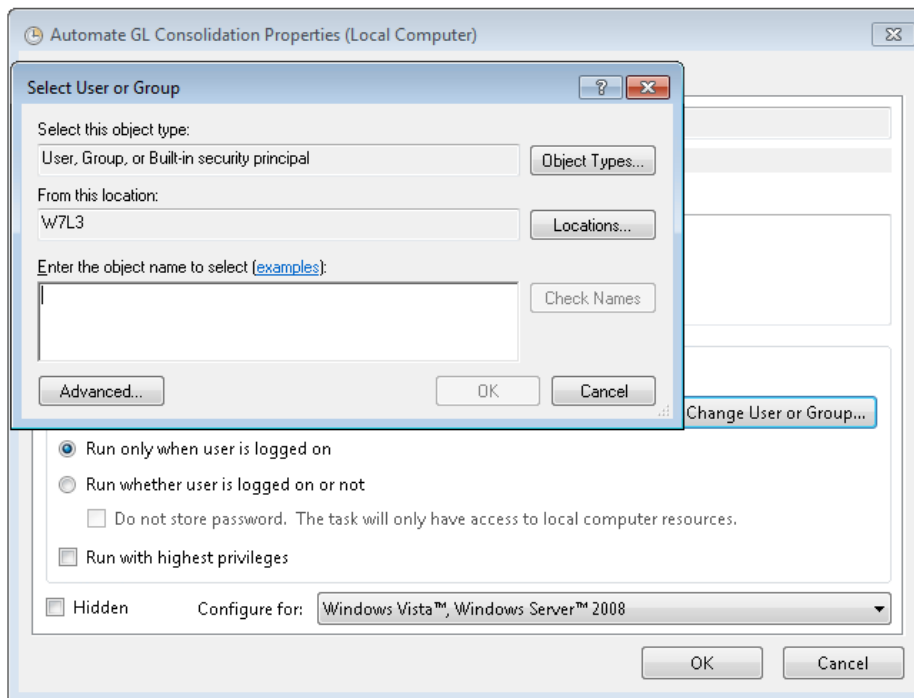


- Add as optional arguments the path to your XML file that you created and saved that are your settings to run Automate G/L Consolidation. Click next.
- Click finish.

Creating and Automating a Scheduled Task



- Depending on your Windows security model you may have to provide a domain account to run the task.
- Click on the properties of the task and Change User or Group.



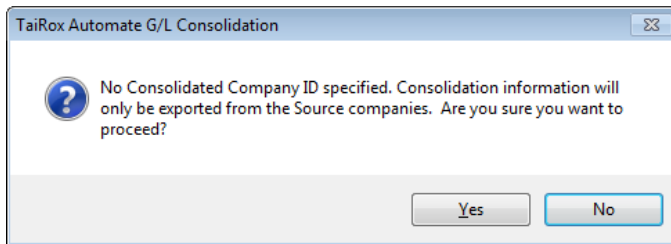
Consolidating a Source Company into Multiple Consolidation Companies

Suppose you have 30 source companies that are to be consolidated into 5 consolidation companies, with some of the same source companies consolidating into more than one consolidation company.

Step 1: Set up Automate G/L Consolidation to do "Only Export" by blanking out the Consolidation Company field in the set up.

The 30 source companies are identified as normal. Saver this XML file as "Export Only".

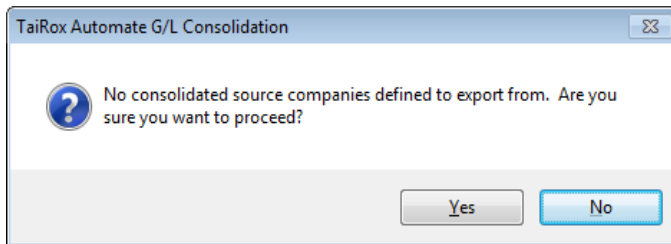
When operating manually during initial setup and testing, you will be warned before this operation proceeds:



Step 2: Set up a BAT file to copy the appropriate files from the export directory into the 5 consolidation import directories.

Step 3: Set up Automate G/L Consolidation with 5 "Import Only" jobs.

These jobs will have no source companies in the setup. When operating manually during initial setup and testing, you will be warned before this operation proceeds:



Troubleshooting Scheduled Task Issues

Check the following settings for the scheduled windows task:

- If the path to the XML file has blanks and there are no quotes (") around the path+file name.
- That the user account for the task has logged onto the machine running the task and has a user profile.
- That you selected "Run whether user is logged on or not".
- That other task settings – e.g. run with highest privileges – have been properly set up.

Note: Make sure that your user account can run Automate G/L Consolidation interactively and can run a scheduled task. Even if using an Admin account, you may have to change Active Directory security settings to run the Automate G/L Consolidation scheduled task with your account.

- Whether another task for Automate G/L Consolidation – created during testing – is already running. (Delete with Task Manager.)

Diagnosing Issues with Scheduled Tasks

If you are setting up as a Windows Scheduled Task, a good strategy is to set up a task and run it on a small test database first – such as SAMLTD. If that works, then set up your production database.

- Set up Automate G/L Consolidation for the small test database (e.g. SAMLTD).
- ***Make sure that Automate G/L Consolidation works interactively before you set up the scheduled task.***
- Create a task using the Create Scheduled Task button in Automate G/L Consolidation to make sure that the paths are correct for the program and for the settings XML file. Incorrect path names are often the issue for tasks.
- Run the task from the Task Scheduler and see if it runs properly. This will prove that you have correct file names (with quotes if blanks are in paths).
- Set up the task to run in 5 minutes, then exit the Task Scheduler and log off. Check to see what happened in 6 minutes.
- Look at the Automate G/L Consolidation logs.
- Check the history of the task in the Task Scheduler. If tasks are still running, delete them.

Now set up the real databases and schedule tasks to run overnight. Come back and check the next day.

- If the notification emails didn't arrive, you'll have to see where they are being blocked.

Example of Settings and Permissions Required to Run a Batch File from a Scheduled Task

See [Fix Scheduled Task -- from Help Desk Geek](#) for an example of the permissions and settings to check to fix a scheduled task that runs a batch file (*.bat). If you can't run a batch file with your account, you cannot run Automate G/L Consolidation.

Automate G/L Consolidation FAQ

Read the user guide carefully in addition to reviewing this FAQ. The user guide provides specific guidelines for configuring Automate G/L Consolidation.

Issues with Running Automate G/L Consolidation from a Task

Note that Automate G/L Consolidation requires a LanPak license to access Sage 300. If there are no LanPak licenses available, the program will not run.

See [Troubleshooting Scheduled Task Issues](#) for more information on diagnosing task issues.

Installation and Upgrade Issues

Q: Where can I get release notes for Automate G/L Consolidation, and what will they tell me?

A: Click the [Release Notes](#) link in the upper left hand corner of the Automate G/L Consolidation product page on the TaiRox web site.

Among other things, the Release Notes will tell you about recent fixes and provide program compatibility information. For example:

Build 2019-09-25 (7207)

- Improved handling of SSL email testing reports non-SSL connection results when SSL connection fails.

Build 2019-06-13 (7103)

- Provides support for Office 365 communication on port 587 when emailing notifications.

- Support provided for Sage 300 2020.

Email Notification Issues

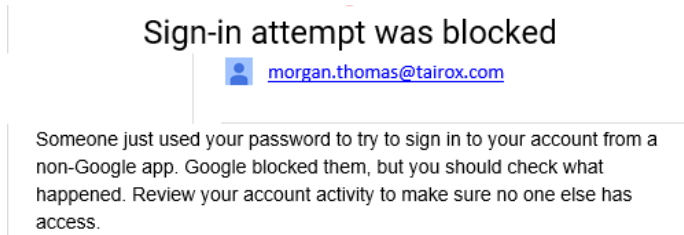
Note regarding “Enable SSL” if unsupported by the SMTP server

If you select the “Enable SSL” checkbox, the program will first try to send a test email securely. If it does not succeed, it will try to send a test email insecurely. The program will display an error message if the secure test fails, but the insecure test is successful.

If this message appears, it means that:

- Your SMTP server does not support current email communication styles on the port provided. (The “Enable SSL” checkbox has different meanings for different email sending mechanisms, particularly older ones.)
- You should uncheck “Enable SSL” to send emails without SSL protection.

Q: Why did Gmail reject my login credentials from Automate G/L Consolidation.



A: The server login was rejected because it didn't come from a "Google" application.

If you are using a Gmail server for email notifications, your server administrator can change the access restrictions to let Automate G/L Consolidation send notifications. Refer to Google support for details.

See Google support – for example, <https://support.google.com/cloudidentity/answer/6260879?hl=en>

Q: What port number should I use for the SMTP server?

A: A "typical" setting would be port 465 with SSL enabled. See the note, above, regarding "Enable SSL".

The default SMTP server ports are as follows:

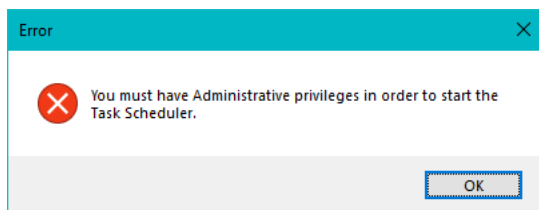
Default Ports:	Server:	Port:
SMTP Server (Outgoing Messages)	Non-Encrypted	25 (or 587)
	Secure (TLS)	587
	Secure (SSL)	465

Ports 465 and 587 are intended for email client to email server communication – sending out email using SMTP protocol.

Port 25 is generally used for communication between mail servers.

Scheduled Task Issues

Q: I'm running Windows 10. I get this message when I click "Start Task Scheduler", and a similar message when I try to create a scheduled task. I am an administrator on the server, and I can start the Task Scheduler from the Windows Search field. What's wrong?



A: *Try running Automate G/L Consolidation as an administrator. Go to Program Files (x86), right-click AutomateGLConsolidation.exe, and select Run As Administrator.*

Q: Why does Automate G/L Consolidation hang when run as a scheduled task?

A: Check [Troubleshooting Scheduled Task Issues](#) in this guide.

When the program is executed it uses a command-line parameter (an XML file name) to provide all configuration information for running.

If the XML filename parameter is missing from the command-line, the program starts and waits for you to provide further input – however, the Download Rates screen is hidden. If you open the Task Manager, you can see and end the task.

If the parameter is there but invalid, the program will generate an error and close (if running from the Task Scheduler).

Q: Why did the scheduled task for Automate G/L Consolidation suddenly stop working?

A: *Check the errors logged for the Windows task and try to run Automate G/L Consolidation interactively to confirm that it still works. For example, one common reason for a sudden failure is that the license has expired.*

Also check [Troubleshooting Scheduled Task Issues](#) in this guide.

Q: FAIL: System Error. Exception occurred at AutomateGLConsolidation. Error='The requested security protocol is not supported.'. Please ensure to install all the latest Windows Updates to enhance your computer's security and performance.

A: *This error message originates from the .NET framework. You can Google the message to see suggestions from other users.*

Check the versions of .NET Frameworks on your system and check that TLS 1.2 protocol is enabled on your server.

Note that although Automate G/L Consolidation uses .NET Framework 4, you also require .NET Framework 4.5 be installed if you are using some of the newer security protocols (TLS 1.2 specifically). Many websites now require that TLS 1.2 or later be used in order to communicate with them.

Install all Windows updates for your platform. For example, Googling shows that early versions of Windows Server 2012 SR2 and Windows 8 had TLS1.2 issues with other applications, typical support / update article:

<https://support.microsoft.com/en-ca/help/3140245/update-to-enable-tls-1-1-and-tls-1-2-as-default-secure-protocols-in-wi>

Q: I changed several settings in Automate G/L Consolidation, then resaved the XML file under a new name. The name is correct in the UI, but the task continues to run as it did before the changes. What's going on?

A: The scheduled task is still using the previous XLM file. You have to edit the scheduled task in the Task Scheduler and specify a new file name on the Actions tab for the task properties.